

## Replacement of the lid damper (see also p17 of the manual)

Switch off the water heat. Successive presses of the “water” button on the remote control unit cycle the water heat through low, medium, high and off.

Disconnect the power supply.

Disconnect the water supply.

Push the button on the side of the unit to release the Bio Bidet from the installation bracket and pull the Bio Bidet forward over the toilet pan. Keep the button pressed and let the water drain into the toilet pan until the tank is completely empty, (the button also operates the water drain valve). Tilting the Bio Bidet nose down will help speed up the draining process.

Lift the complete unit away from the toilet pan.

Remove the Deodoriser cartridge. (BB-1000 model only)

Remove the lid by gently flexing it at the hinge points and pulling it away from the Bio Bidet

To open the unit, unscrew the two screws at the back of the unit (image 1)

Insert a **large** screwdriver into the two slots on the base of the unit and lever the top cover off the base (image 2).

When the case is open, disconnect the four electrical connectors shown in (images 3 & 4).



Image 1



Image 2



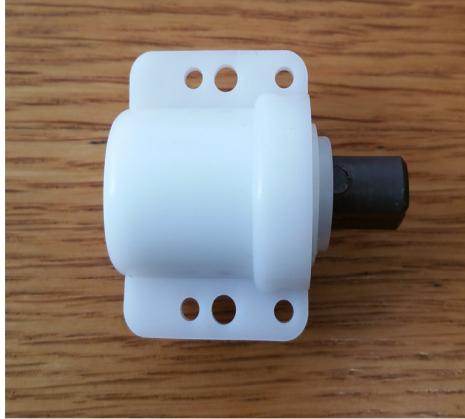
Image 3



Image 4

Image 4 shows interior view of the top casing with the lid damper towards the bottom right of the picture. Image 5 shows a lid damper.

Remove the failed lid damper and fit the replacement, taking care not to over tighten the screws. Note that the damper is not symmetrically shaped so it can only be fitted one way. If it is rotated half a turn, it will not fit.



**Image 5**

Re attach the connectors in images 3 & 4 and refit the cover, taking care not to pinch any wires as you close it. Please make sure that the top and bottom casings are firmly pressed and clicked together (image 2) before tightening the screws at the back of the case. Do not over tighten.

Replace the Bio Bidet on the installation bracket and reconnect the water and power in reverse order to the removal.

When you slide the unit onto the installation bracket, ensure it clicks securely into position otherwise the drain valve might not fully close, resulting in water leakage.

When the Bio Bidet is completely refitted with power connected and the seat unoccupied, press a wash button momentarily. You should hear the tank fill up.

Select water heat as required when the tank has filled.

The Bio Bidet is now ready for use.